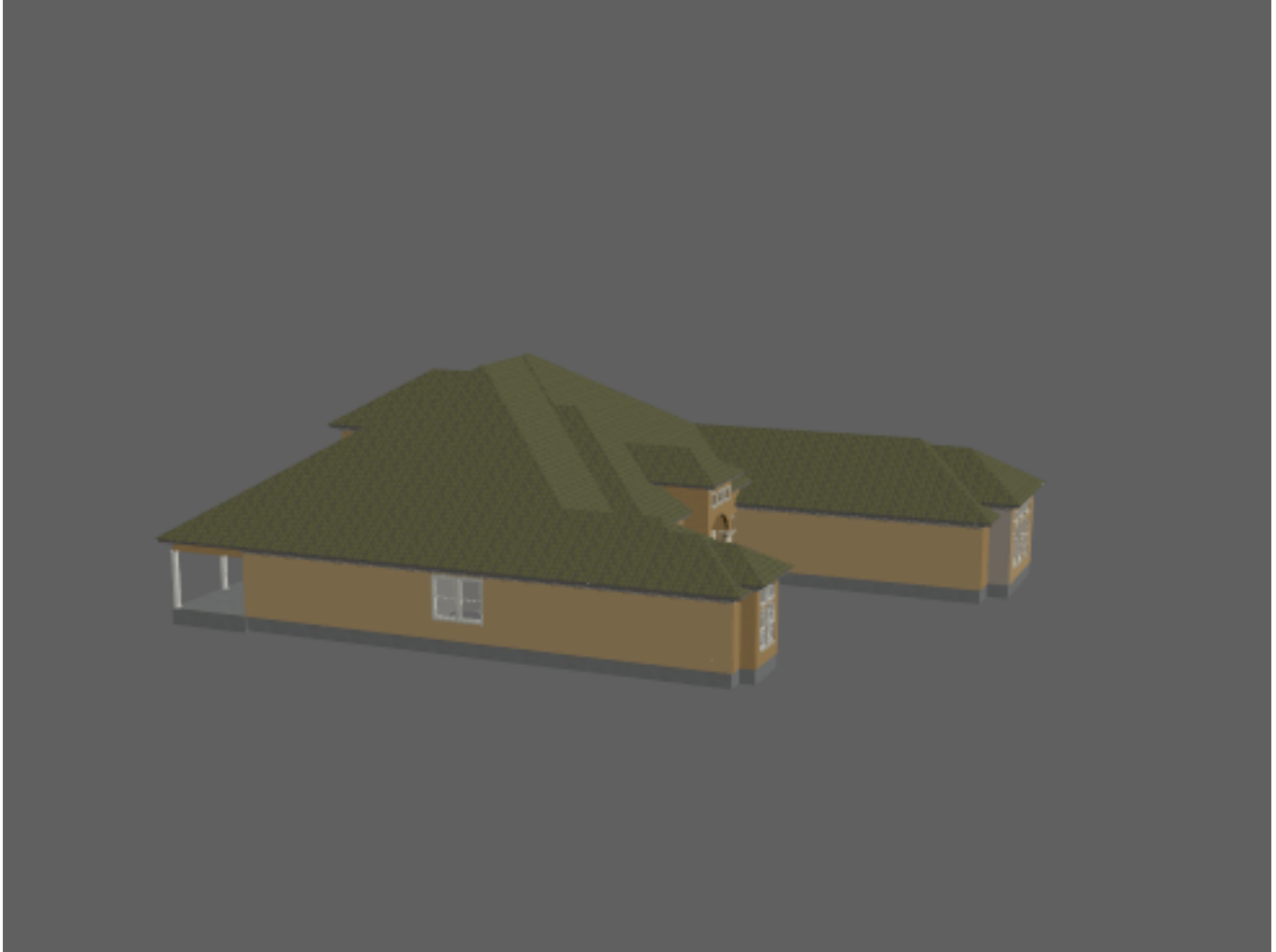


3D PDF Model
Ministerial Retreat in
The Sanctuary at Costa Grande

Port O'Connor, Texas

4 Bedroom, 5 Full baths, 2 Half Baths, 3+-Car Garage, Boat House & Dock



Instructions to view 3D PDF Model

Basic:

1. Left Click on the 3D pdf model to show tool bar.
2. Select the various views from the drop down list under "Views".
3. Make sure that the "Background Color" and "Lighting" is acceptable for viewing the model. Otherwise make adjustments using the 2 tools on the right side of the tool bar.

Advanced:

4. Use "Spin", "Pan" and "Zoom" under the drop down arrow on the leftmost button on the tool bar. Avoid the default "Rotate" mode as it is harder to control. (*Note: Select on the "Views" if you lose control of the model.*)
5. Explore the rest of the tools on the tool bar as you wish.